



**BRING THE
ELEPHANT
HOME**

for a world where people and elephants can coexist in harmony

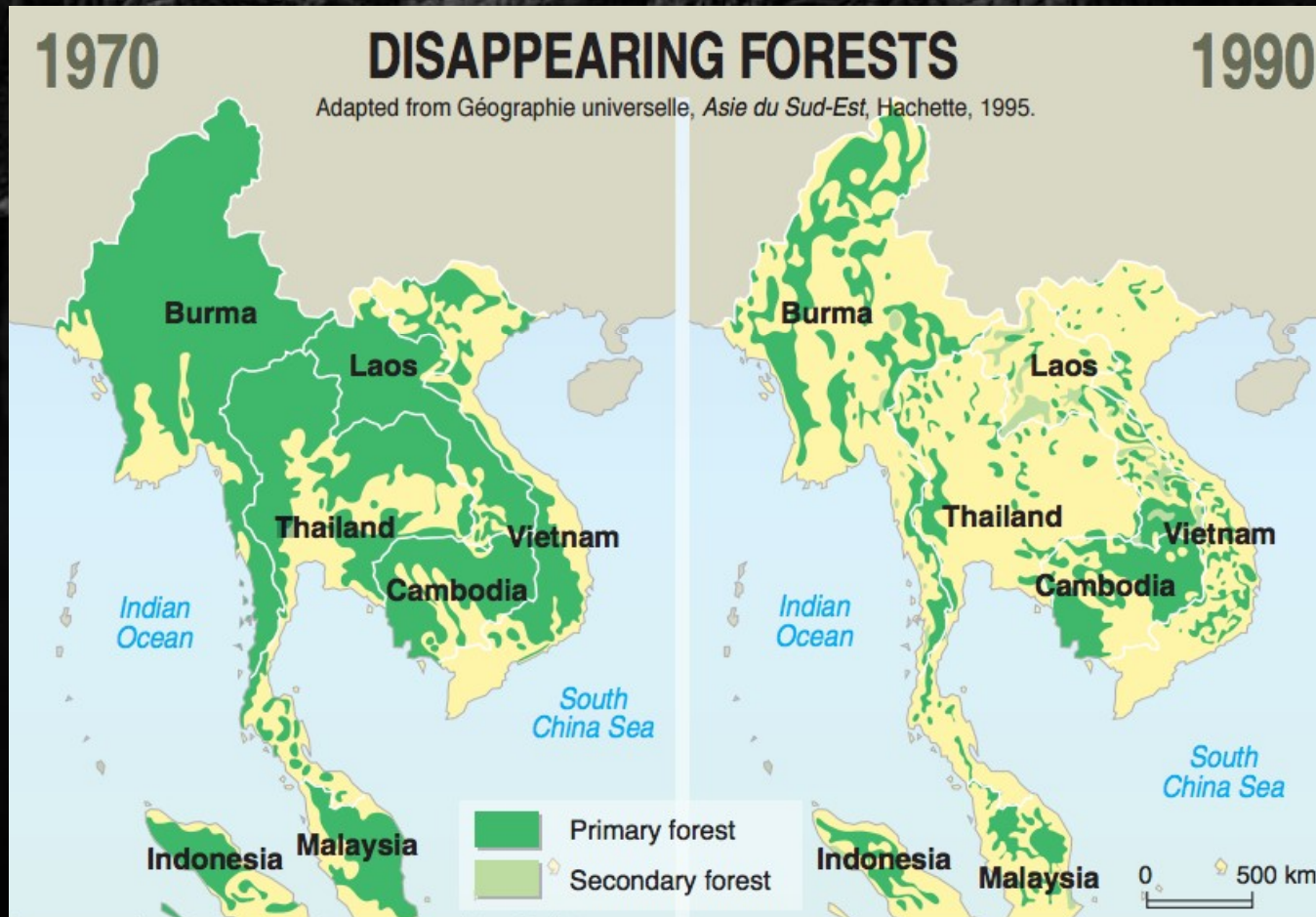
Mission **Bring the Elephant Home**

To better the chance of survival for elephants worldwide and to help creating a world where people and elephants can coexist in harmony through a holistic stakeholder approach with a focus on practical, sustainable solutions.

Asian elephant (*Elephas maximus*)



Asian elephant (*Elephas maximus*)



Human-elephant **conflicts** in Thailand



Human-elephant **conflicts** in Thailand



Chanthaburi,
Sept 17, 2017



Kanchanaburi,
Sept 18, 2017



Conservation Leadership Program

Goal

Asian elephant populations in three protected areas in Thailand are effectively conserved, as a result of habitat restoration and Human-Elephant Conflict mitigation initiatives implemented by empowered local conservation leaders.

Objectives

1. Six conservation leaders have been recruited and trained for the CLP network of Bring the Elephant Home, and are actively engaged in facilitating elephant conservation and HEC mitigation projects in and around Salakpra Wildlife Sanctuary, Phu Luang Wildlife Sanctuary, Kaeng Hang Meow, and potentially Kaeng Krachan / Kuiburi National Park.
2. BTEH has the institutional capacity to more efficiently realize its goals.

Conservation Leadership Program

Expected results

1. Establishment and operationalization of the network of 6 conservation leaders. The call to apply for the 2017-2018 CLP will be shared within BTEH's network, including the previous cohort of conservation leaders. Based on the new project proposals, a new team will be installed. The project facilitator will coordinate the network to keep leaders motivated, connected and informed.
2. Project management functioning well.

Conservation Leadership Program

Outputs

1. A bigger, more professional and sustainable organization.
2. A trained and functioning network of Thai leaders with an educational background and experience in conservation work will be part of BTEH.
3. A training program for conservation leaders and community members, focusing on building leadership capacity, action-orientated conservation and the development of organizational and communication skills, has been developed.
4. Tools to connect leaders (web-based platform and citizen science app), to get peer support from network members and for monitoring purposes have been developed.
5. New conservation projects initiated by the leaders to increase biodiversity, safeguard corridors and improve wild elephant habitat.
6. Additional funding mobilized through project proposals.
7. Scientific report on the impacts of HEC on the livelihood of communities and their attitude towards conservation efforts has been published.

A call for Conservation Leaders

- Have ideas for elephant conservation in Salakpra Wildlife Sanctuary?
 - Chance to be part of the 'conservation think tank platform'
 - Capacity building & support throughout the project development program by BTEH team
- More information www.bring-the-elephant-home.org

Email info@bring-the-elephant-home.org | Application deadline 20th Aug'15



CRITICAL ECOSYSTEM
PARTNERSHIP FUND

Conservation Leadership Program

CRITICAL ECOSYS
PARTNERSHI



Participatory Action Research

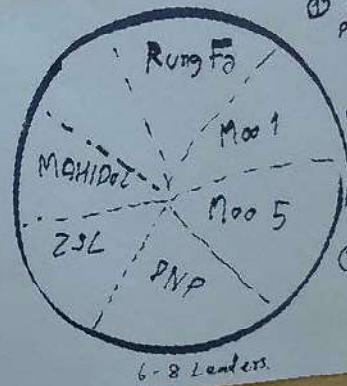
TRAINING NEEDS ASSESSMENT # CLP

For 'conservation Leaders' Sept - Oct. KANCHANABURI.

CLP - INTRODUCTION

<p>TRAINING NEEDS ASSESSMENT</p> <p>conservation project training network</p>	<p>SUPPORT PLATFORM</p> <ul style="list-style-type: none"> • Growingly Interested / Expertise • Planning Communication
<p>ICE-BREAKING</p> <p>SHARE PROJECT IDEAS</p>	<p>PLAN 4 THE FUTURE</p> <ul style="list-style-type: none"> • Formulate Project ideas • CLP personal action plan.

2 days workshop.



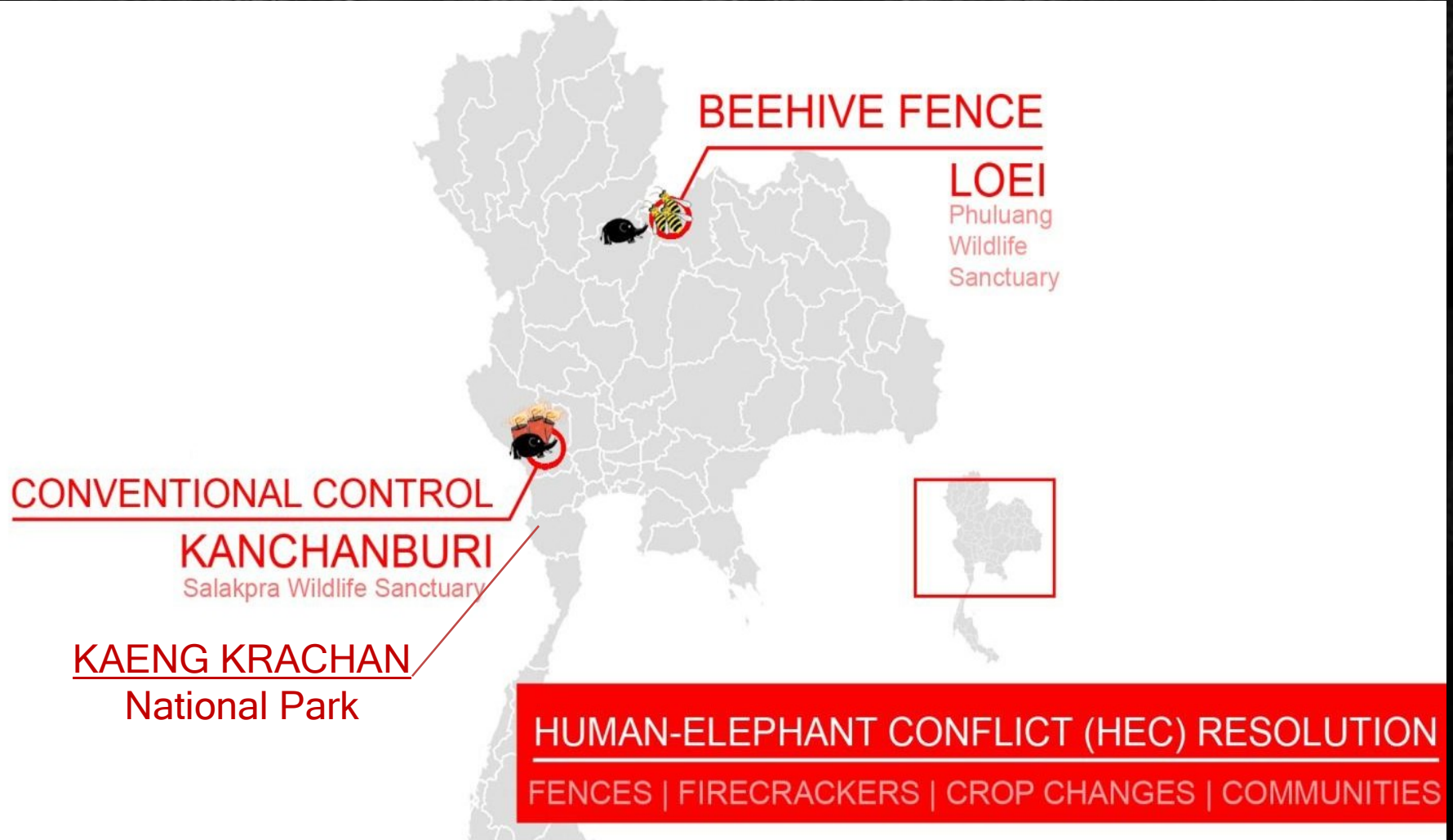
- ① TNA & Project Network Formulation **OCT**
- ② Capacity Building Proposal writing **NOV**
- ③ Online Platform **OCT - NOV**



Faces of Conservation Leaders



Locations of knowledge exchange sites



HEC survey Kanchanaburi

- **53%** of the surveyed households reported experiencing a negative impact from HEC over the last two years (N=410)
- **28%** of the participants tolerate elephants unconditionally (N=410)
- **38%** tolerate elephants if they would stop destroying crops
- A positive attitudes towards elephants correlates **positively** with perceiving benefits and **negatively** with plantation ownership
- **50%** of plantation owners prefers elephants to be eradicated (N=410)

The majority of the plantation owners do have a positive attitude towards conservation and the concept of **beehive fencing** as an effective HEC mitigation method.

Deterrence methods



Deterrent Method	% plantation owners that use method	Perceived efficacy		
		'Effective'	'Semi-effective'	'Not effective'
Fire crackers	87.0%	60.0%	30.0%	10.0%
Electric fencing	47.8%	4.5%	63.6%	31.8%
Elephant watch towers	41.3%	26.3%	31.6%	42.1%
Non-electric fencing	34.8%	18.8%	31.3%	50.0%
Light (flashlight)	10.9%	100.0%	0.0%	0.0%
Noise (car, dog, voice)	6.5%	100.0%	0.0%	0.0%
Rangers	2.2%	0.0%	0.0%	100.0%



Firecrackers were judged an effective method by **60%** of the participants that used them. Whereas those who used electric fences were, only **4.5%** were satisfied with their effectiveness.

HEC survey Kanchanaburi

BEEHIVE FENCE

รั้วรังผึ้ง



Beehive fencing: even farm owners with a very negative attitude toward elephants are interested in trying beehive fencing. **33%** of the farmers is willing to start using beehive fences now, and **61%** want to learn more about this new method.



First study trip: Loei



Second study trip: Kaeng Krachan



HECTOR

Human
Elephant
Conflict
Tool for
Ongoing
Research



HECTOR





CLP LESSONS LEARNED

3 things that worked well:

- **Connecting communities in HEC areas. Inspiration.**
- **Participatory Action Research: Workshops – Voice**
- **Capacity growth within BTEH: knowledge, more effective projects, monitoring, research, network**

CLP LESSONS LEARNED

3 things that worked less well:

- **HECTOR app: implementation**
- **Discussions between conservation leaders held through web-based platform / knowledge & experience exchange beyond field trips**
- **Organizational growth of BTEH:
Staff/ Finance**

CLP LESSONS LEARNED

Key lessons learned:

- **New HEC mitigation methods**
- **Importance of Participatory Action Research, voice, knowledge exchange and field trips.**
- **What improves attitudes toward elephants & HEC**
- **To not only focus on conservation outcome but also on organizational growth**



Logo on the black t-shirt, featuring a stylized white symbol and the text "WORLD RIVERS" and "WATER" below it.

Graphic on the grey t-shirt showing a stylized bee and a palm tree, with the text "BEE THE CHANGE" printed below.

D-14









Camera trap study



Date	Observed	Entered	
Aug 22, 2016	6	5	
Sept 5, 2016	7	4	
Sept 8, 2016	1	0	
Sept 9, 2016	3	0	
Sept 12, 2016	35	0	
Oct 15, 2016	2	1	
Oct 17, 2016	1	0	
Oct 25, 2016	1	0	
Nov 1, 2016	1	0	
Nov 6, 2016	14	0	
Nov 7, 2016	2	1	
Nov 29, 2016	20	2	
Dec 1, 2016	1	1	
Dec 15, 2016	12	0	
Feb 22, 2017	1	0	
	107	14	13%
Mean group size	7.13		
Median group size	2.00		
Mode group size	1		



**BRING THE
ELEPHANT
HOME**

www.bring-the-elephant-home.org