

POCKET IDENTIFICATION GUIDE OF MAIN VULNERABLE SPECIES INCIDENTALLY CAUGHT IN MOROCCAN FISHERIES

Simplified guide adapted for Morocco (GSA 3) from the Identification guide of vulnerable species incidentally caught in Mediterranean fisheries



IN COLLABORATION WITH



FUNDED BY



MARINE MAMMALS



Stenella coeruleoalba

Striped dolphin /
الدلفين الأزرق والأبيض (المخطط)
Ad: 1.8-2.6 m
NB: 85-95 cm



Glo Med



Grampus griseus

Risso's dolphin /
دلفين ريسو (غرامبوس)
Ad: 3 - 4 m / NB: 1.2 - 1.5 m



Glo Med



Delphinus delphis

Common dolphin /
الدلفين الشائع
♂: 2.0-2.6 m / ♀: 2.4 m /
NB: 80-90 cm



Glo Med



Globicephala melas

Long-finned pilot whale /
كروي الرأس الشائع (الحوث القاتم)
♂: 5.5-6.2 m / ♀: 4.5-5.5 m
NB: 1.7-1.8 m



Glo Med



Tursiops truncatus

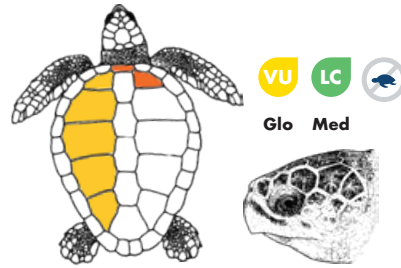
Common bottlenose dolphin /
الدلفين الكبير (ذو الأنف الزجاجي)
♂: 2.5 - 3.9 m / ♀: 2.2-3.2
NB: 1-1.2 m



Glo Med



SEA TURTLES



Caretta caretta

Loggerhead turtle / سلحفاة بحرية ضخمة الرأس
♂: 75-80 cm; ♀: 66-85 cm



Glo Med

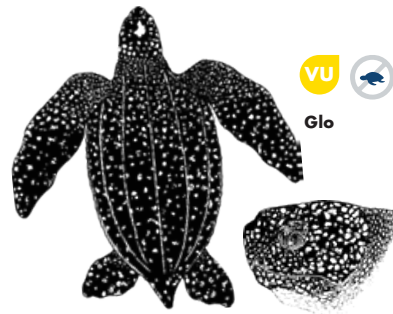


Chelonia mydas

Green turtle / السلحفاة الخضراء
Ad (♂ and ♀): 80-120 cm



Glo



Dermochelys coriacea

Leatherback sea turtle /
سلحفاة المحيط جلدية الظهر
Average adult length 1.4-1.6 m



Glo



SEABIRDS



Winter

Summer

Larus michahellis

Yellow-legged gull /
نورس ميكاهيل
Wingspan: 1.2 - 1.4 m



Glo



Winter

Summer

Larus audouinii

Audouin's gull /
نورس أودوين
W: 1.17 - 1.28 m



Glo



Winter

Summer

Larus melanocephalus

Mediterranean gull /
نورس متوسطي
W: 94 - 102 cm



Glo



Winter

Summer

Larus ridibundus

Black-headed gull /
نورس أسود الرأس
W: 86 - 99 cm



Glo



Adult

Juvenile

Larus fuscus

Lesser black-backed gull /
نورس أسمر
W: 1.44 - 1.66 m

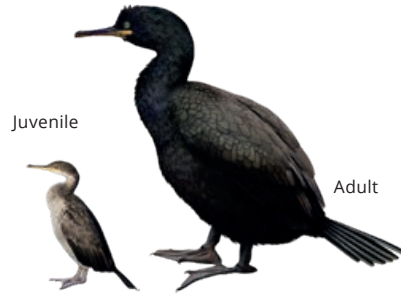


Glo

SEABIRDS



LC *Phalacrocorax carbo*
Great Cormorant / غاق كبير
Glo W: 77 – 94 cm



LC *Gulosus aristotelis desmarestii*
European shag / غاق أرسطو
Glo W: 1.15 – 1.25 m



VU *Puffinus yelkouan*
Yelkouan shearwater / جلم ماء متوسطي
Glo W: 70 – 84 cm



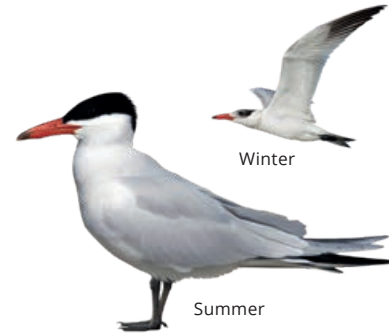
CR *Puffinus mauretanicus*
Balearic shearwater / جلم ماء موريطاني
Glo W: 78 – 90 cm



LC *Calonectris diomedea*
Scopoli's shearwater / جلم ماء سكوبولي
Glo W: 1.12 – 1.22 m



LC *Hydrobates pelagicus*
European storm petrel / AR: NA
Glo W: 37 – 41 cm



LC *Hydroprogne caspia*
Caspian tern / خرشنة قزوينية
Glo W: 96 – 111 cm



LC *Thalasseus sandvicensis*
Sandwich tern / خرشنة ساندويتش
Glo W: 85 – 97 cm



LC *Thalasseus bengalensis*
Lesser crested tern / خرشنة البنغال
Glo W: 76 – 82 cm



LC *Sternula albifrons*
Little tern / خرشنة صغيرة
Glo W: 41- 47 cm



LC *Sterna hirundo*
Common tern / خرشنة خطافية
Glo W: 70 – 80 cm



Mustelus asterias – SDS

Starry smooth-hound shark /
كلب نجمي (قطاط)
Ad: up to 1.4 m

LC VU
Glo Med



Prionace glauca – BSH

Blue shark / قرش أزرق (كلب بحر)
Ad: up to 4 m

NT CR
Glo Med



Galeorhinus galeus – GAG

Tope shark / مُتسوّلة (قطاط)
Ad: up to 1.6 m

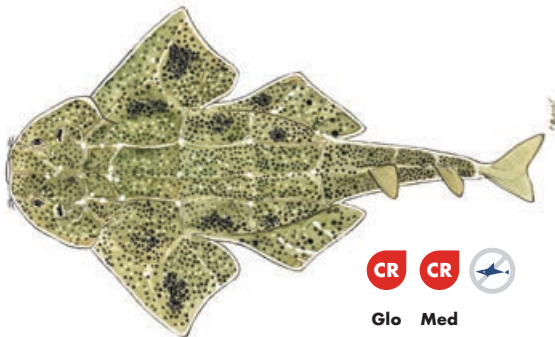
VU VU
Glo Med



Scyliorhinus canicula – SYC

Small-spotted catshark / قِط صغير مبرقش (كاتارلي / نمر)
Ad: up to 1 m (60 cm in Mediterranean)

LC LC
Glo Med

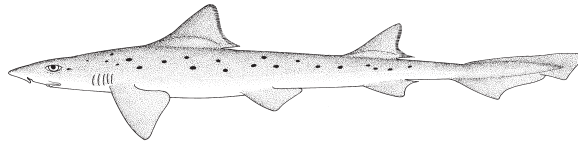


Squatina squatina – AGN

Angelshark / ملاك شائع (سفن وقاص)
Ad: up to 2.5 m total length

CR CR
Glo Med

CHONDRICHTYANS



Mustelus punctulatus – MPT

Blackspotted smooth-hound /
كلب مُنقَط (قطاط)
Ad: up to 1.9 m

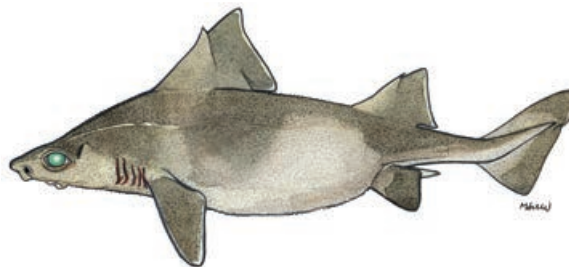
DD VU
Glo Med



Carcharhinus plumbeus – CCP

Sandbar shark / قرش رمادي (كلب بحر)
Ad: up to 3 m

VU EN
Glo Med



Oxynotus centrina – OXY

Angular rough shark /
حمار البحر (نعجة)
Ad: up to 1.5 m

VU CR
Glo Med



Dalatias licha – SCK

Kitefin shark / كوسج شراعي الزعنفة
Ad: up to 1.82 m

VU VU
Glo Med



Isurus oxyrinchus – SMA

Shortfin mako /
زرقايا (زرقايا)
Ad: up to 4.5 m

VU CR
Glo Med



Sphyrna zygaena – SPZ

Smooth hammerhead /
أبو مطرقة ناعم (قرش بومطرقة)
Ad: up to 5 m

VU CR
Glo Med



Squalus blainville – QUB

Longnose spurdog /
كلب أبو شوكة مُتأنف قطاط بوشوكة
Ad: 50 – 80 cm in total length,
occasionally until 1.1 m

DD DD
Glo Med

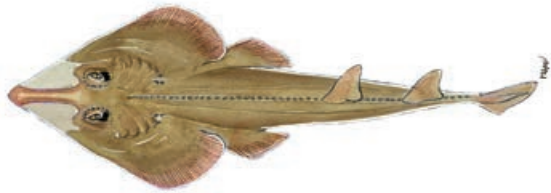


Hexanchus griseus – SBL

Bluntnose six-gill shark / كلب أبو ستة (الدودة)
Ad: up to 5 m

NT DD
Glo Med

CHONDRICHTYANS



Rhinobatos rhinobatos - RBC

Common guitarfish /
قيثارة شائعة (محرث / قرس)
Ad: 1.5 m in total length



Glo Med



Pteroplatytrygon violacea - PLS

Pelagic stingray /
راية لاسعة بنفسجية (الزرقايا)
Ad: Disc wide up to 80 cm



Glo Med

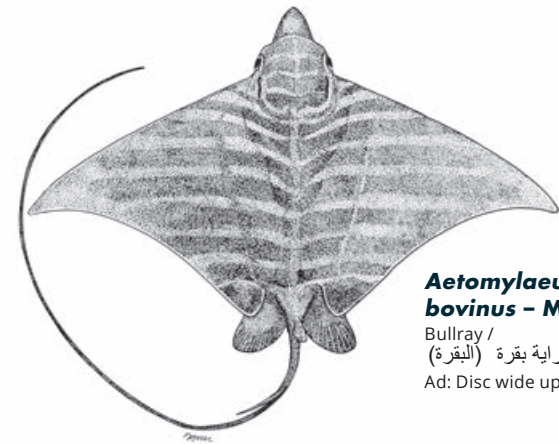


Dasyatis pastinaca - JDP

Common stingray /
راية لاسعة شائعة (حمام)
Ad: Disc wide up to 68 cm



Glo Med



Aetomylaeus bovinus - MPO

Bullray /
راية بقرة (البقرة)
Ad: Disc wide up to 2.2 m



Glo Med

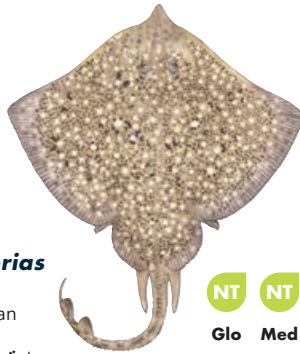


Glaucostegus halavi - RBH

Halavi ray /
قيثارة شائعة (محرث / قرس)
Ad: 1.2 m in total length
(probably up to 1.71 m)



Glo



Raja asterias - JRS

Mediterranean
starry ray /
راية مية (قرشلة)
Ad: up to 80 cm in total length



Glo Med



Raja brachyura - RJH

Blonde ray / AR: NA
Ad: up to 1.2 m
in total length



Glo Med



Gymnura altavela - RGL

Spiny butterfly ray /
راية الفراشة (حصيرة)
Ad: Disc wide up to 4 m, common 2 m



Glo Med



Leucoraja circularis - RJL

Sandy ray / راية رملية
Ad: up to 1.2 m total length



Glo Med



Raja miraletus - JAI

Brown ray / راية ام عيون (قرشلة)
Ad: up to 70 cm in total length



Glo Med



Raja montagui - RJM

Spotted ray / راية مبرقشة
Ad: up to 80 cm in total length



Glo Med



Raja clavata - RJC

Thornback ray /
راية مشوكة الظهر (قرشلة)
Ad: up to 90-130 cm in total length



Glo Med

SPONGES



Massive keratose sponges – KERA



Sarcotragus sp.



Sarcotragus sp.



Hippospongia communis



Ircinia variabilis

Globular sponges – GLOS



Suberites domuncula



Tethya aurantium



Thenia spp.

Massive Mediterranean stony sponge – PETR



Petrosia ficiformis (burgundy morph)

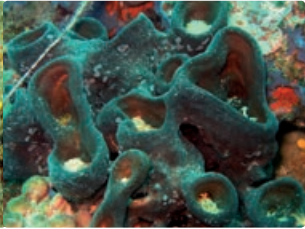


Petrosia ficiformis (white morph)

Lamellate to cup-shaped sponges – LAMS



Spongia lamella



Calyx nicaeensis

Arborescent sponges – ARBS



Axinella sp.

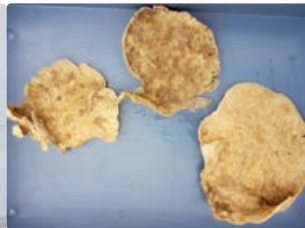


Axinella cannabina

Fan-shaped sponges – FANS



Phakellia ventilabrum



Phakellia robusta

Massive, (sub-) spherical hard sponges (*Geodia* spp.) – GEOD



Geodia cydonium

Massive-tubular gold sponges (*Aplysina* spp.) – APLY



Aplysina spp.

Lamellate rock sponges (*Leiodermatium* sp.) – ROCK



Leiodermatium pfeifferae

Other massive sponges (to be recorded as "Other massive") – OTHR



Agelas oroides

Birds' nest glass sponge – BIRD



Pheronema carpenteri

Felt vase glass sponge – FELT



Asconema setubalense

CORALS

Soft corals – SOFT



Alcyonium palmatum

Thick and tall red, yellow fan-shaped gorgonians – FANG



Acanthogorgia hirsuta

Paramuricea clavata

VU

Seapens – PENS



Pteroeides spinosum and *Pennatula* spp.

Bamboo corals – BAMB



Isidella elongata

CR

Bright yellow or salmon-pink hard corals (*Dendrophyllia* spp.) – DEND



Dead *dendrophyllids*

Dendrophyllia cornigera

EN

Dendrophyllia ramea

VU

Thin, delicate white, reddish, yellow fan-shaped gorgonians – THIG



Paramuricea macrospina

Precious red coral – REDC



Corallium rubrum

EN

Flexible white and salmon-pink fan-shaped gorgonians (*Eunicella* spp.) – EUNI



Eunicella cavolini

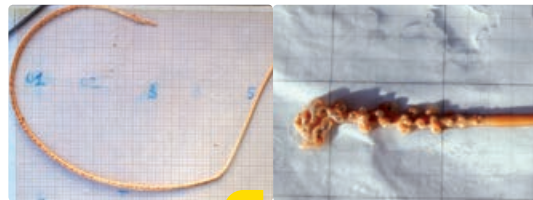
Eunicella verrucosa

Salmon-pink, brittle fan-shaped gorgonians – CALL



Callogorgia verticillata

White, stem-like sea pens – STEM



Funiculina quadrangularis

VU

Kophobelemnion stelliferum

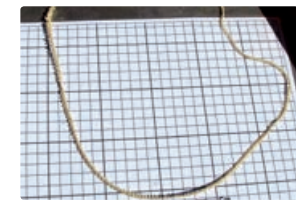
Candelabrum-shaped, red gorgonians – ELLP



Ellisella paraplexauroides

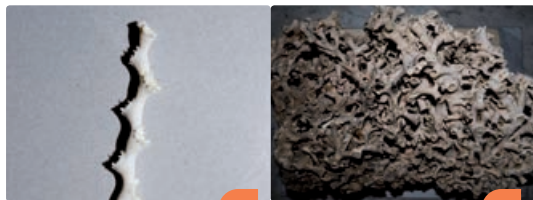
VU

Tall, white or yellow whip gorgonians (*Viminella flagellum*) – VIMF



Viminella flagellum

White corals – WHIT



Madrepora oculata

EN

Lophelia pertusa

EN

Colonial hard corals – CLAD



Cladocora caespitosa

EN

Arborescent black corals – BLAC



Antipathella subpinnata

Parantipathes larix

Leiopathes glaberrima

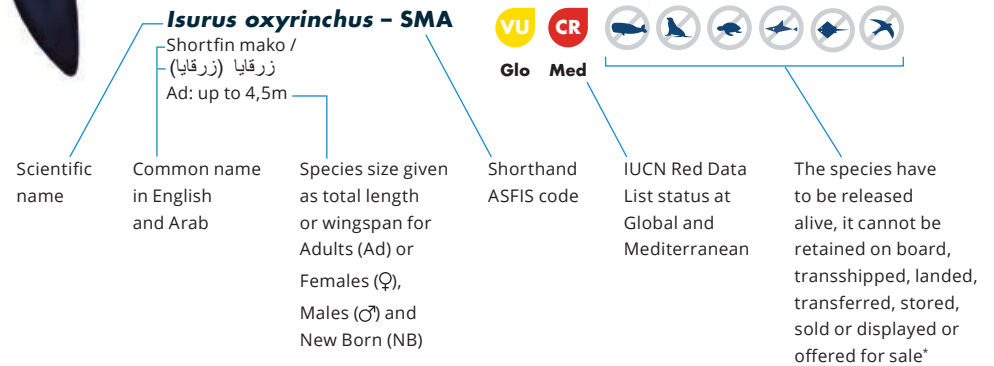
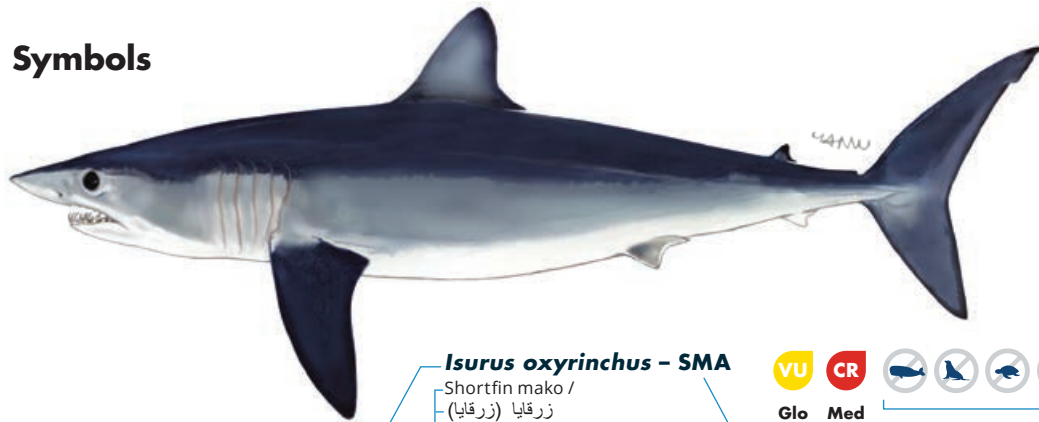
EN

Antipathes dichotoma

Abbreviations

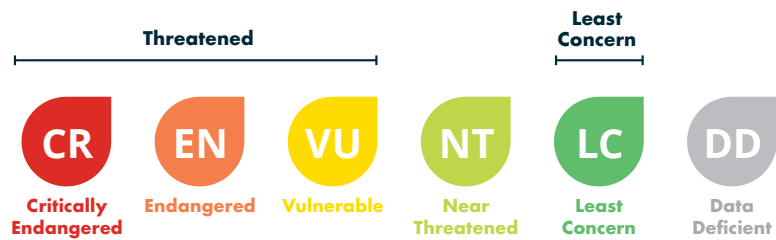
Ad: Adult
 ♂: Male
 ♀: Female
 NB: New Born
 W: Wingspan

Symbols



Key to IUCN Red List category symbols

For each species sheets, the IUCN categories relating to the conservation status both globally (Glo) and Mediterranean (Med) level are reported, according to the following scheme:



Geographical subarea (GSA) 3 refers to Southern Alboran Sea. If the incidentally caught species is not included in this guide, please refer to the **Identification guide of vulnerable species incidentally caught in Mediterranean fisheries**, which also provides detailed information on the conservation status, regulations and protection of each species (under ACCOBAMS, SPA/BD Protocol, CITES, CMS, GFCM, IUCN).
 Illustration source of sharks and rays: FAO Original scientific illustrations archive. Reproduced with permission.

* GFCM recommendations related to the management and conservation of vulnerable species in the GFCM area of application: seabirds (Rec. GFCM/35/2011/3); sea turtles (Rec. GFCM/35/2011/4); cetaceans (Rec. GFCM/36/2012/2; Res. GFCM/43/2019/2); sharks and rays (Rec. GFCM/36/2012/3; Rec. GFCM/42/2018/2) and corals (Res. GFCM/43/2019/6).
 National legislation: Annual bylaw relating to the organisation of hunting and bylaw of 28 September 1995 regulating the exercise of fishing by Ministry of Agriculture, Water Resources and Fisheries.



QR Code