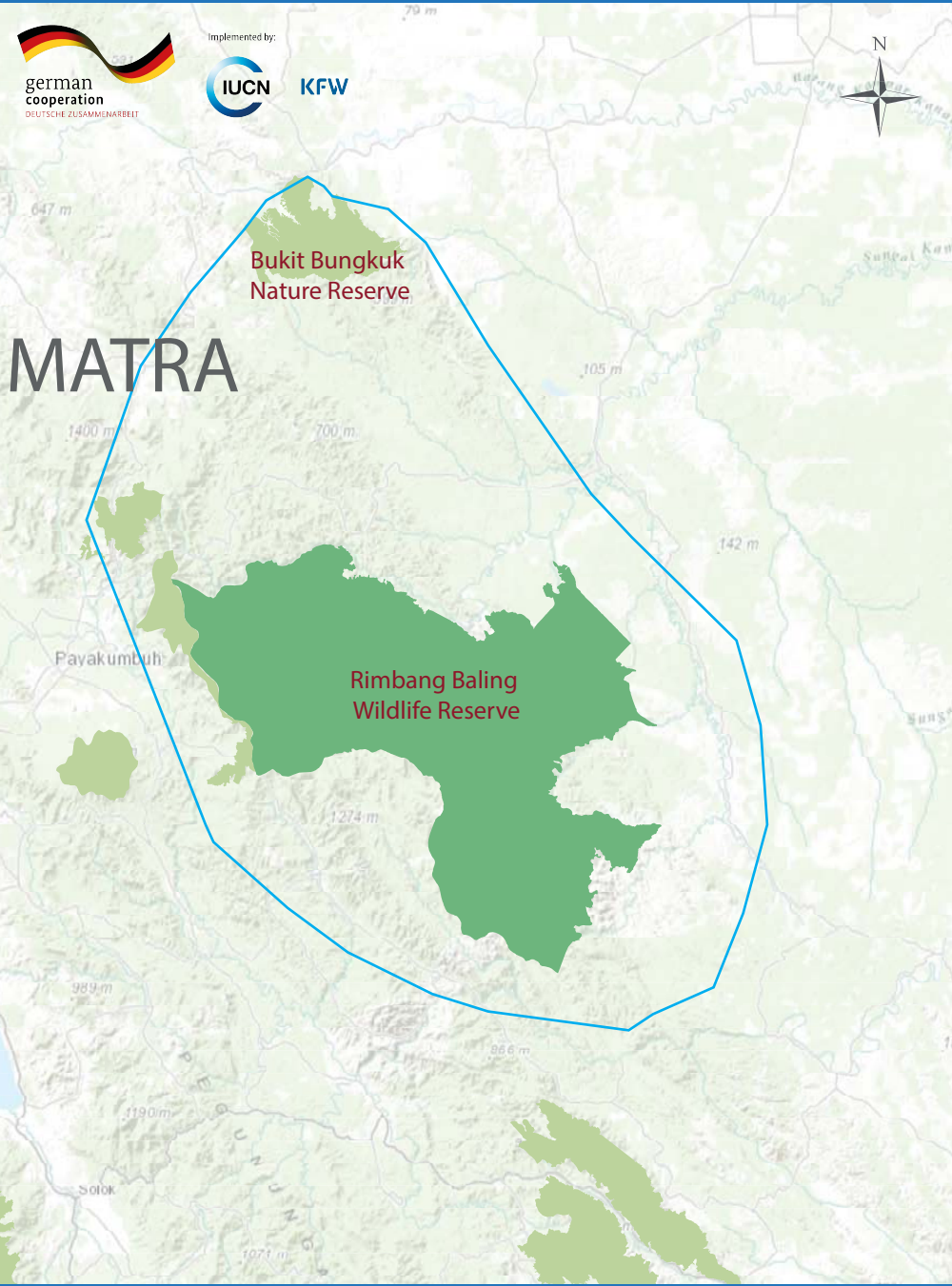




# WWF Germany / WWF Indonesia (Sumatra)

Code 1311 - Partners: International NGO; National /Local NGOs & Government Agencies.  
 >Tiger Conservation Landscape n°6<

IUCN-KfW funding: 1.5 - 2 million EUR



**Objective:** Rimbang Baling continues to serve as a tiger source site and critical linkage for tiger movements in Central Sumatra actively co-managed by local communities.

### Highlights (project outcomes):

• By 2019, tiger, habitat and prey loss are reduced through a multi-stakeholder Integrated Tiger-Habitat Protection System (ITHPS) in Rimbang Baling

**Current tiger population: ~20 --> Expected increase: ~35 tigers**

• By 2019, Rimbang Baling comes under an effective, nationally recognized collaborative multi stakeholder management framework, with operational management plan

• By 2019, a representative number of RB core zone and selected immediate border communities actively support and benefit from the RB co-management systems

### Project investments:

- Two guard posts built and equipped with renewable energy
- 350 camera-traps for monitoring
- GPS, rucksacks, tents, audio recorders
- Vehicles
- Four agroforestry demo sites
- Ten villages sanitation and waste facilities
- Three villages hydro plants and/or solar farms
- Ecotourism equipment
- One community and education centre
- One radio station to prevent wildlife conflicts

### Sustainable livelihoods:

- Participatory management plan
- Village development plans
- Strengthening existing ecotourism, benefit sharing, micro-finance, governance
- Renewable energy deployed
- Optimisation of rubber plantations
- Improved options for agroforestry
- Training on reducing energy and waste

**Project Lead:** World Wide Fund for Nature (WWF) Germany  
**Project Partners:** WWF Indonesia (WWF ID); YAPEKA; INDECON; WWF Tiger Alive Initiative; The Nature Conservation Agency (BKSDA); Directorate for Conservation Areas and the Advancement of Protection Forests; Directorate for Biodiversity Conservation; Forestry Planning Agency; Forestry Offices at the Provincial and Regency Levels; Tourism Offices at the Provincial and Regency Levels; Regency, sub-Regency, and Village Offices

Map Sources: World Wide Fund For Nature, IUCN, Protected Planet, Esri, HERE, DeLorme, TomTom, Intermap, Increment P. Corp., GEBCO, USGS, FAO, NPS, NRCAN, WWF, Geobase, IGN, Kadaster NL, Ordnance Survey, Esri Japan, METI, Esri China (Hong Kong), swisstopo, MapmyIndia © OpenStreetMap contributors, and the GIS User Community